

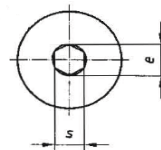
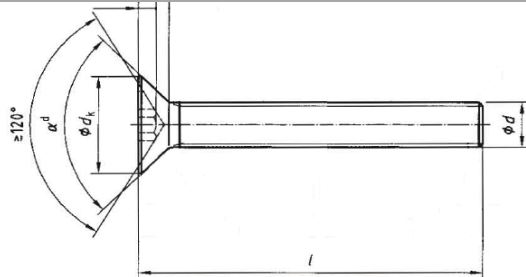
Болт Vira с фрезенкова глава вътрешен шестостен неръждаем M4x12 мм, 7.0, A2, 0.7 мм, DIN 7991



ART.5933 sim. ISO 10642 ex UNI 5933 DIN 7991

Vite a testa svasata plana con cava esagonale

Hexagon socket countersunk head screw



disponibile in A2 / A4
available in A2 / A4



| d | M3 | M4 | M5 | M6 | M8 | M10 | M12 | (M14) | M16 | M20 |
|---------|-------|-------|-------|-------|-------|-------|-------|--------|--------|--------|
| dk max. | 6,72 | 8,96 | 11,2 | 13,44 | 17,92 | 22,4 | 26,88 | 30,8 | 33,6 | 40,32 |
| e min. | 2,303 | 2,873 | 3,443 | 4,583 | 5,723 | 6,863 | 9,149 | 11,429 | 11,429 | 13,716 |
| k max. | 1,86 | 2,48 | 3,1 | 3,72 | 4,96 | 6,2 | 7,44 | 8,4 | 8,8 | 10,16 |
| s nom. | 2 | 2,5 | 3 | 4 | 5 | 6 | 8 | 10 | 10 | 12 |
| t min. | 1,1 | 1,5 | 1,9 | 2,2 | 3 | 3,6 | 4,3 | 4,5 | 4,8 | 5,6 |

La dimensioni tra parentesi sono sconsigliate
The size in brackets should be avoided if possible

| I/d | M3 | M4 | M5 | M6 | M8 | M10 | M12 | (M14) | M16 | M20 |
|-----|------|------|------|------|------|-------|-------|-------|-------|-------|
| 5 | 3x5 | / | / | / | / | / | / | / | / | / |
| 6 | 3x6 | 4x6 | 5x6 | / | / | / | / | / | / | / |
| 8 | 3x8 | 4x8 | 5x8 | 6x8 | / | / | / | / | / | / |
| 10 | 3x10 | 4x10 | 5x10 | 6x10 | 8x10 | / | / | / | / | / |
| 12 | 3x12 | 4x12 | 5x12 | 6x12 | 8x12 | / | / | / | / | / |
| 14* | 3x14 | 4x14 | 5x14 | 6x14 | 8x14 | / | / | / | / | / |
| 16 | 3x16 | 4x16 | 5x16 | 6x16 | 8x16 | 10x16 | / | / | / | / |
| 18* | 3x18 | 4x18 | 5x18 | 6x18 | 8x18 | / | / | / | / | / |
| 20 | 3x20 | 4x20 | 5x20 | 6x20 | 8x20 | 10x20 | 12x20 | / | / | / |
| 22* | / | 4x22 | 5x22 | 6x22 | 8x22 | / | / | / | / | / |
| 25 | 3x25 | 4x25 | 5x25 | 6x25 | 8x25 | 10x25 | 12x25 | 14x25 | 16x25 | / |
| 30 | 3x30 | 4x30 | 5x30 | 6x30 | 8x30 | 10x30 | 12x30 | 14x30 | 16x30 | / |
| 35 | 3x35 | 4x35 | 5x35 | 6x35 | 8x35 | 10x35 | 12x35 | 14x35 | 16x35 | / |
| 40 | 3x40 | 4x40 | 5x40 | 6x40 | 8x40 | 10x40 | 12x40 | 14x40 | 16x40 | 20x40 |
| 45 | / | 4x45 | 5x45 | 6x45 | 8x45 | 10x45 | 12x45 | 14x45 | 16x45 | 20x45 |

*Lunghezze non previste dalla norma ISO 10642 e da considerarsi similar

These measures aren't ISO 10642 but you can consider them similar DIN

Le lunghezze standard sono quelle tra le due linee in grassetto.
The range of commercial lengths is between the bold stepped lines.

 = Le misure non evidenziate (bianco), che secondo la norma ISO 10642, dovrebbero avere il filetto parziale, sono in realtà totali filetto e quindi da considerarsi similar

The not highlighted measures (white) should have a partial thread, according to the ISO 10642 norm, while ours are actually total thread and are therefore to be considered as "similar to"

 = Le misure evidenziate in azzurro sono totali filetto in accordo con la normativa ISO 10642

The blue highlighted measures are total thread in accordance with ISO 10642

last edit 22/07/2019

Pag. 2/3

DRAWING N. 1069

| I/d | M3 | M4 | M5 | M6 | M8 | M10 | M12 | (M14) | M16 | M20 |
|-----|----|------|-------|-------|-------|--------|--------|--------|--------|--------|
| 50 | / | 4x50 | 5x50 | 6x50 | 8x50 | 10x50 | 12x50 | 14x50 | 16x50 | 20x50 |
| 55 | / | / | 5x55 | 6x55 | 8x55 | 10x55 | 12x55 | / | 16x55 | / |
| 60 | / | 4x60 | 5x60 | 6x60 | 8x60 | 10x60 | 12x60 | 14x60 | 16x60 | 20x60 |
| 65 | / | / | 5x65 | 6x65 | 8x65 | 10x65 | 12x65 | / | 16x65 | / |
| 70 | / | 4x70 | 5x70 | 6x70 | 8x70 | 10x70 | 12x70 | 14x70 | 16x70 | 20x70 |
| 75* | / | / | 5x75 | / | 8x75 | 10x75 | / | / | / | / |
| 80 | / | / | 5x80 | 6x80 | 8x80 | 10x80 | 12x80 | 14x80 | 16x80 | 20x80 |
| 90 | / | / | 5x90 | 6x90 | 8x90 | 10x90 | 12x90 | / | 16x90 | 20x90 |
| 100 | / | / | 5x100 | 6x100 | 8x100 | 10x100 | 12x100 | 14x100 | 16x100 | 20x100 |
| 110 | / | / | / | / | 8x110 | 10x110 | 12x110 | / | 16x110 | 20x110 |
| 120 | / | / | / | 6x120 | 8x120 | 10x120 | 12x120 | / | 16x120 | / |
| 130 | / | / | / | / | 8x130 | 10x130 | 12x130 | / | / | / |
| 140 | / | / | / | / | 8x140 | 10x140 | 12x140 | / | 16x140 | 20x140 |
| 150 | / | / | / | / | 8x150 | / | 12x150 | / | / | 20x150 |

*Lunghezze non previste dalla norma ISO 10642 e da considerarsi similar

These measures aren't ISO 10642 but you can consider them similar DIN

Le lunghezze standard sono quelle tra le due linee in grassetto.
The range of commercial lengths is between the bold stepped lines.

 = Le misure non evidenziate (bianco), che secondo la norma ISO 10642, dovrebbero avere il filetto parziale, sono in realtà totali filetto e quindi da considerarsi similar

The not highlighted measures (white) should have a partial thread, according to the ISO 10642 norm, while ours are actually total thread and are therefore to be considered as "similar to"

 = Le misure evidenziate in azzurro sono totali filetto in accordo con la normativa ISO 10642

The blue highlighted measures are total thread in accordance with ISO 10642

last edit 22/07/2019

Pag. 3/3

DRAWING N. 1069

Продукт: [Болт Vipa с фрезенкова глава вътрешен шестостен неръждаем M4x12 мм, 7.0, A2, 0.7 мм, DIN 7991](#)

Категория: [Болтове и винтове метрична резба](#)

Бранд: [Vipa](#)

Категория бранд: [Болт Vipa](#)